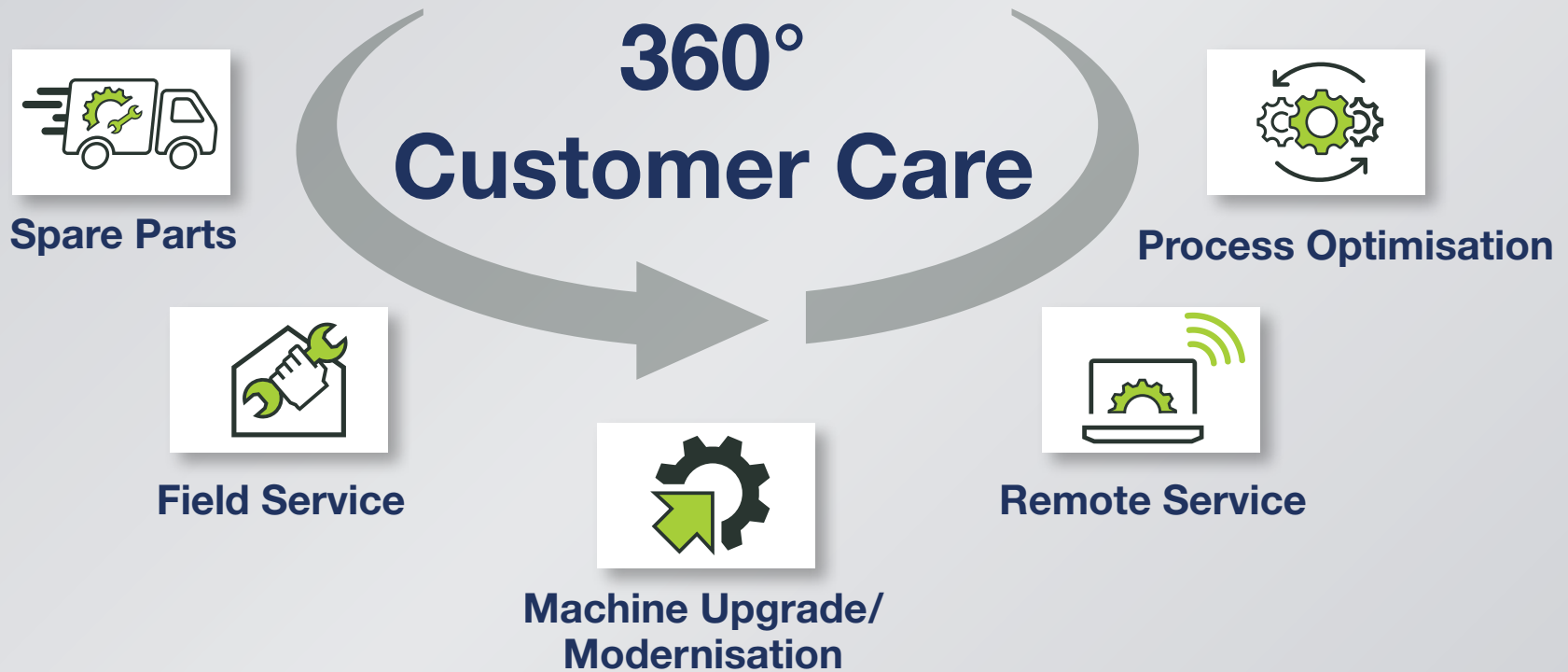


# FAWEMA



**FAWEMA**

**HDG**

**WOLF**



## Spare Parts

Original parts from FAWEMA ensure optimal efficiency of machines. We deliver spare parts for any of our machines, regardless of age.



## Field Service

Our services are tailored to your needs. We work closely and on a partnership-basis with you, to ensure that your machine can achieve the highest possible performance.



## Machine Upgrade / Modernisation

We prioritise further developments of hardware and software, ensuring your machine is fitted with the latest technology.



## Remote Service

You can save time and money by using digital tools. We are happy to provide you with the necessary hardware and servicing for that.



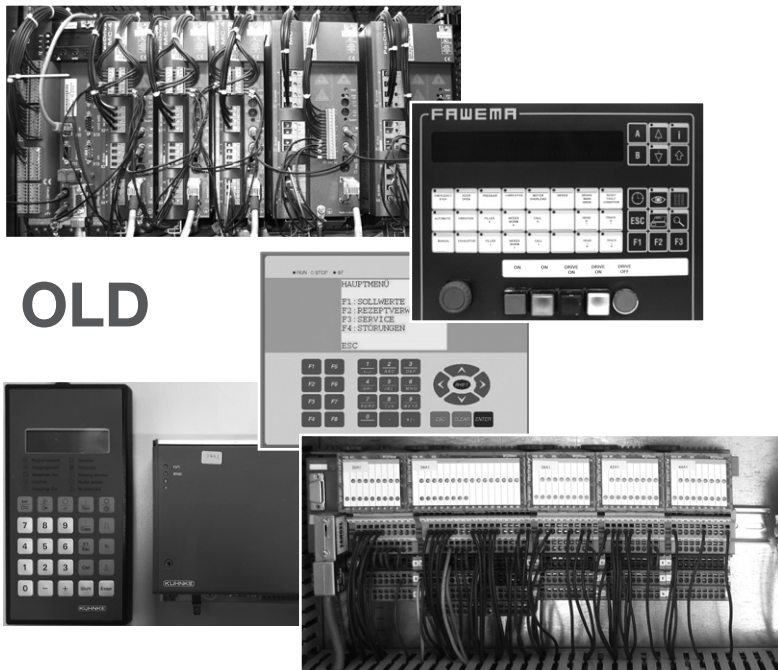
## Process Optimisation

Process – optimisation of the production – small changes can have a large impact on the machine performance. Our process experts with more than 20 years' experience will be on hand to help you every step of the way.

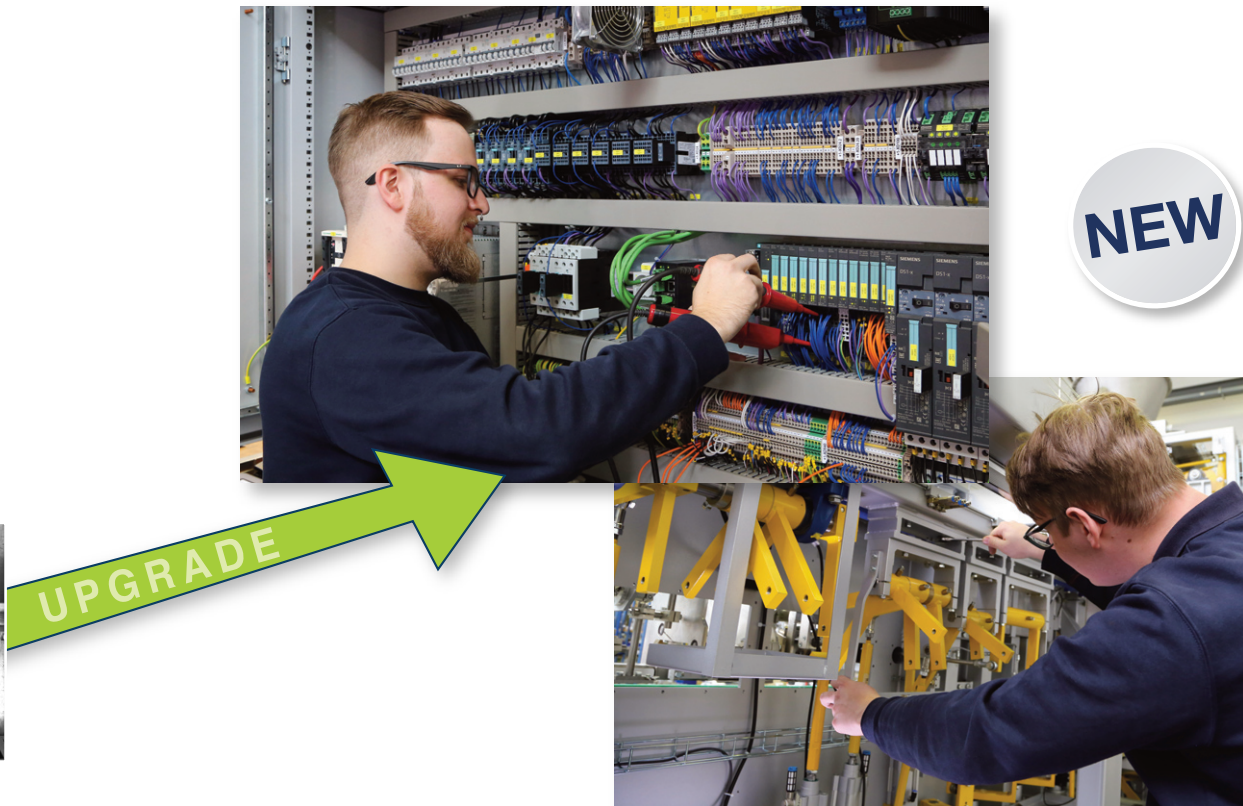
Switch now to the latest technology and upgrade your electrical parts in order to prevent long downtimes.

**FAWEMA**

Obsolete components are a big risk. Downtimes of several weeks cannot be avoided in the event of a fault!  
A thunderstorm - a short circuit - a voltage surge and your system could come to a halt - as some components can no longer be supplied.



**OLD**



See below our recommended upgrades so that your **FAWEMA** machine will continue to be a reliable part of your production in the future!

**FAWEMA**

**HDG**

**WOLF**

Replace your aging, (no longer available) cam controller with a plug and run replacement kit. Thanks to this modification downtimes are kept to a minimum.

OLD



NEW



## ATTENTION!

If the obsolete parts fail, the downtime will be several weeks long. The supply of spares for the parts listed here can no longer be guaranteed. Avoid running this risk and use our **upgrade** so that your FAWEMA machine will continue to be a reliable part of your production in the future!

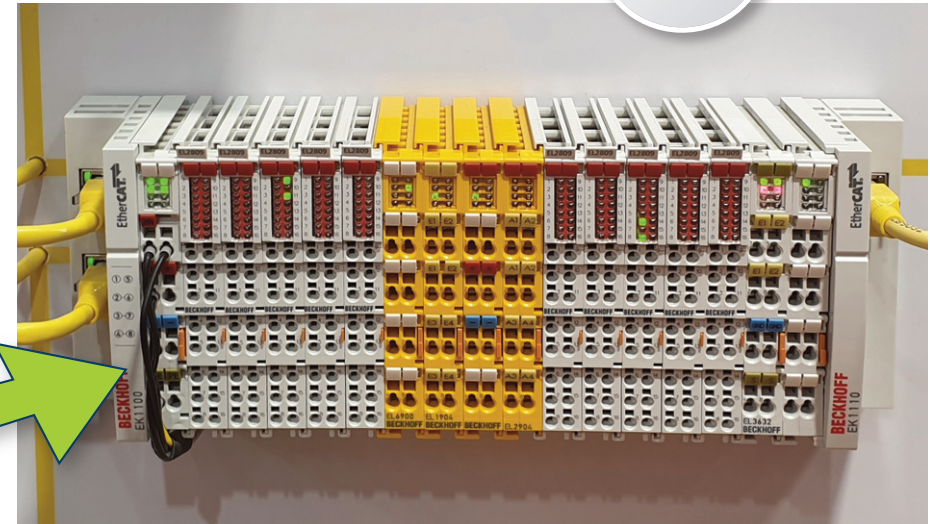
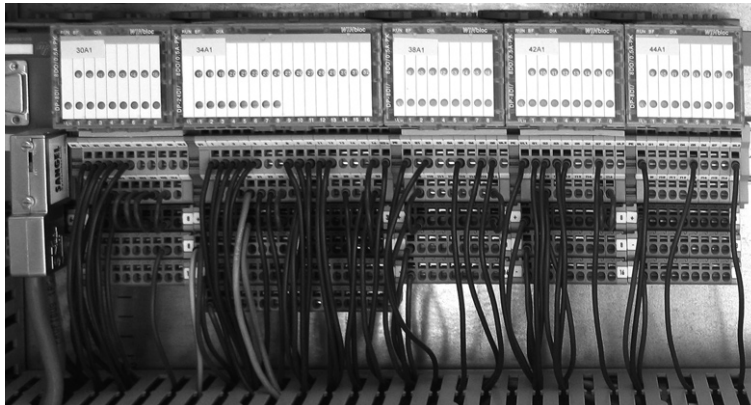
## The following are no longer available:

- Kuhnke Kuax 674, control unit & encoder
- Kuhnke Kuax 671, control unit & encoder

Switch to state-of-the-art part from your no longer available I / O technology

**NEW**

**OLD**



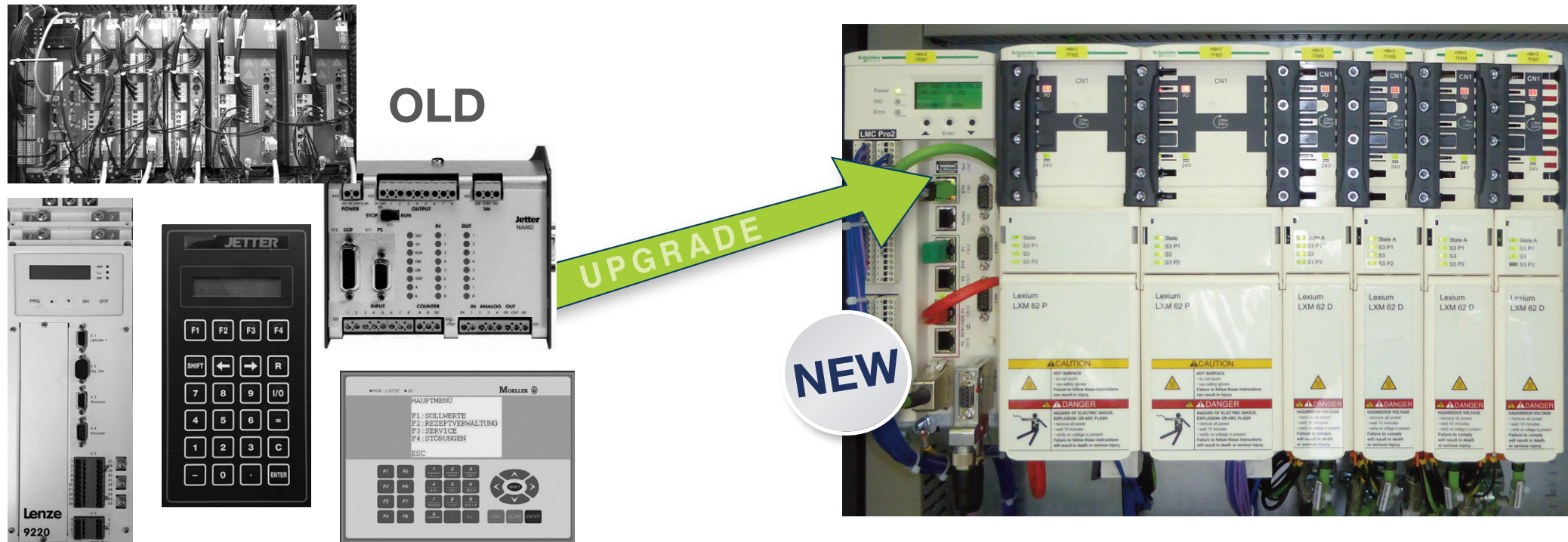
**ATTENTION!**

If the obsolete parts fail, the downtime will be several weeks long. The supply of spares for the parts listed here can no longer be guaranteed. Avoid running this risk and use our upgrade so that your FAWEMA machine will continue to be a reliable part of your production in the future!

**The following are no longer available:**

- All modules from Moeller  
8 DI / 8 DO  
24 DI / 8 DO

Exchange obsolete, discontinued dosing technology for the latest generation of servo drives and controls.



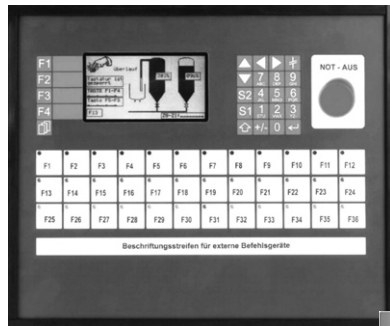
**ATTENTION!**

If the obsolete parts fail, the downtime will be several weeks long. The supply of spares for the parts listed here can no longer be guaranteed. Avoid running this risk and use our upgrade so that your FAWEMA machine will continue to be a reliable part of your production in the future!

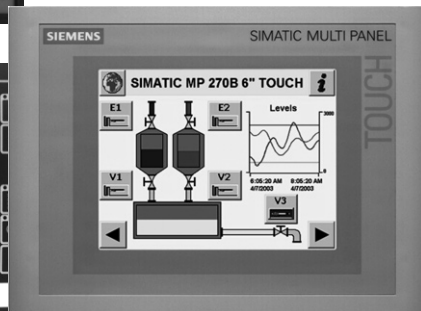
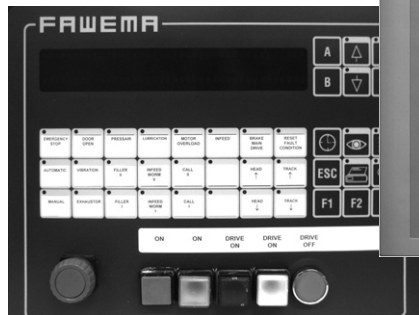
**The following are no longer available:**

- Elau / Schneider PacDrive M
- Jetter Nano B control unit
- Moeller VXC-101 control unit
- Lenze control unit
- Clutch brake unit
- Hengstler control unit

The latest touch-screen technology enables you to easily operate your system!



OLD



UPGRADE



NEW



## ATTENTION!

If the obsolete parts fail, the downtime will be several weeks long. The supply of spares for the parts listed here can no longer be guaranteed. Avoid running this risk and use our **upgrade** so that your FAWEMA machine will continue to be a reliable part of your production in the future!

## The following are no longer available:

- older Siemens Simatic such as:
  - TP 270 B
  - TP 277 B
  - OP 73 ...
- Ebelt BT 15
- Ebelt Best 240



**FAWEMA GmbH**  
Wallefelder Straße  
51766 Engelskirchen, Germany

Tel.: +49 22 63 716-143  
Fax: +49 22 63 716-521  
[service@fawema.com](mailto:service@fawema.com)